

# U35-4 OPTIONS

## STANDARD EQUIPMENT

### Safety system

- Engine start safety system
- Travel motor with disc brake
- Swivel motor with disc brake
- All hydraulic control

### Working equipment

- Auxiliary hydraulic circuit 1 with proportional control on right control lever
- 2 working lights on cab and 1 light on the boom
- Dozer blade with float function
- Thumb bracket and relief valve

### Operator's Space

- ROPS/FOPS canopy
- Weight-adjustable full suspension seat
- Retractable seat belt
- Hydraulic pilot control levers with wrist rests
- Travel levers with foot pedals
- Two pattern selection system
- Digital panel with diagnosis function
- 12V power source
- Cup holder
- Horn

### Engine/Fuel system

- Double element air filter
- Auto idling system
- Water separator with drain cock

### Undercarriage

- Dozer blade with float
- 300mm rubber track
- 1 × upper track roller
- 5 double-flange track rollers on each side
- 2-speed travel switch on dozer lever
- 2-speed travel with auto-shift

### Hydraulic system

- Pressure accumulator
- Hydraulic pressure checking ports
- Straight travel circuit
- Third line hydraulic return
- 2 variable pumps and 1 gear pump
- Adjustable maximum oil flow on auxiliary hydraulic circuits 1
- Auxiliary switch (AUX1) on right control lever

### Others

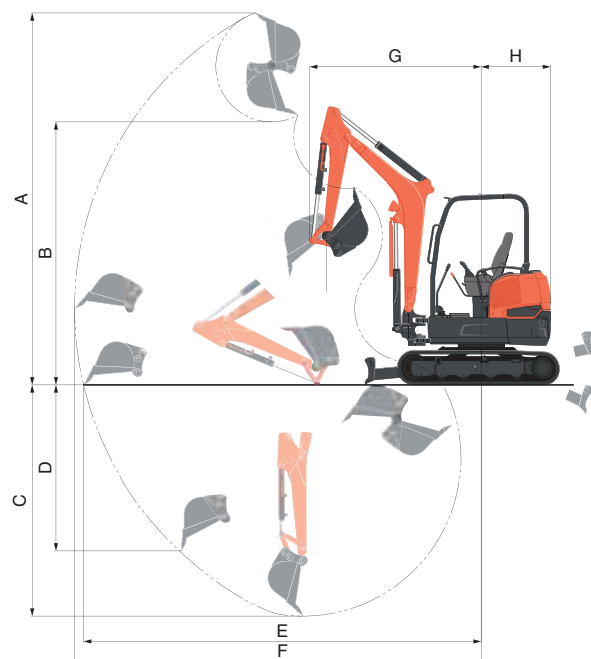
- Tool box
- Grease gun holder

## OPTIONAL EQUIPMENT

- Cab with A/C
- Canopy lights
- Rear working lights
- Beacon lights
- Angle blade with float function and BOE
- Travel alarm
- Spark arrest muffler

## WORKING RANGE

Model				U35-4
A	Max. digging height	mm		4844
B	Max. dumping height	mm		3370
C	Max. digging depth	mm		2970
D	Max. vertical digging depth	mm		2013
E	Max. digging radius at ground	mm		5165
F	Max. digging radius	mm		5272
G	Min. turning radius	W/O swing	mm	2250
		W swing	mm	1755
H	Min. tail turning radius	mm		901

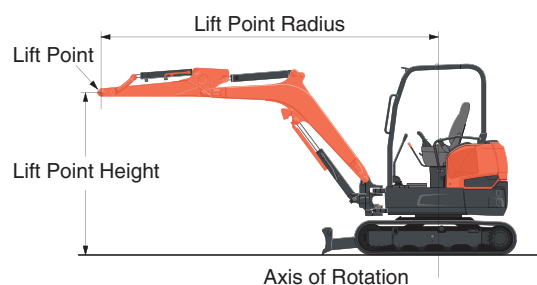


## LIFTING CAPACITY

Canopy rubber

LIFT POINT HEIGHT (m)		LIFTING CAPACITY OVER-FRONT BLADE DOWN unit=kg			LIFTING CAPACITY OVER-SIDE unit=kg		
		LIFT POINT RADIUS (m)			LIFT POINT RADIUS (m)		
		2	3	MAX	2	3	MAX
GL	2.5	—	—	—	—	—	—
	1.5	—	—	—	—	—	—
	0.5	—	—	—	—	—	—
	0	—	—	—	—	—	—

Machine with ROPS canopy and rubber crawler, without bucket

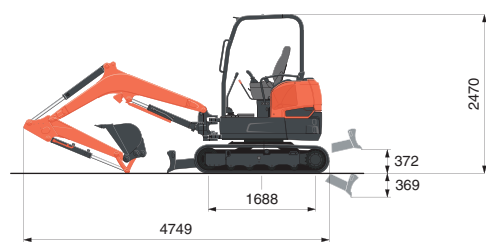
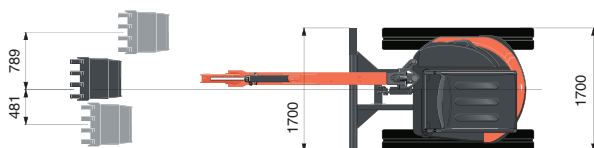


# SPECIFICATIONS

Model			U35-4		
Type of ROPS / FOPS			Canopy / Cab		
Type of tracks			Rubber / Steel		
Engine	Model		Kubota D1703M-DI-E4		
	Output (SAE J1995 gross)	HP (kW) / rpm	24.8 (18.5) / 2200		
	Output (SAE J1349 net)	HP (kW) / rpm	23.9 (17.8) / 2200		
	Displacement	cc	1647		
Dimensions	Overall length	mm	4749		
	Overall height	mm	2470		
	Overall width	mm	1700		
	Min. ground clearance	mm	288		
Hydraulic system	Pump capacity	ℓ/min	39.6. x 2 / 20.9 x 1		
	Auxiliary hydraulic flow	AUX1 ℓ/min	60		
	Max. breakout force	Bucket / Arm kgf	3594 / 2019		
Drive system	Travel speed	Low / High km/h	3.0 / 4.6		
	Max. traction force	Low speed kgf	2763		
	Tumbler distance	mm	1688		
	Crawler length	mm	2084		
	Shoe width	Rubber mm	300		
	Ground contact pressure	Rubber Canopy / Cab kPa (kgf/cm <sup>2</sup> )	4.89 (0.34) / 5.08 (0.36)		
		Steel Canopy / Cab kPa (kgf/cm <sup>2</sup> )	5.00 (0.35) / 5.19 (0.36)		
Swing system	Unit swing speed	rpm	8.9		
	Boom swing angle	Left / Right degree	71 / 45		
Blade	Dimensions	Width mm	1700		
		Height mm	343		
	Max. lift above ground	mm	372		
	Max. drop below ground	mm	369		
Hydraulic oil (Reservoir / System)			ℓ	44.6 / 61	
Fuel reservoir			ℓ	12.4 (46.9)	
Operating weight (Including operator's weight @ 175 lbs.)	Rubber Canopy / Cab		kgs	3687 / 3833	
	Steel Canopy / Cab		kgs	3776 / 3922	

The company reserves the right to change the above specifications without notice. This brochure is for descriptive purposes only. Please contact your local Kubota dealer for warranty information. For your safety, Kubota strongly recommends the use of a Rollover Protective Structure (ROPS) and seat belt for almost all applications.

## DIMENSIONS



Unit: mm

©2013 Kubota Corporation

# Kubota

## KUBOTA Tractor Australia Pty Ltd

25-29 Permas Way, TRUGANINA Vic, 3029  
 Freecall: 1800 334 653  
 Email: sales@kubota.com.au

Web Site: <http://www.kubota.com.au>

## CB Norwood Distributors Ltd

PO Box 1265, 888 Tremaine Avenue,  
 Palmerston North 0800 KUBOTA  
 Tel: 06 356 4920 Fax: 06 356 4939

Web Site: <http://www.kubota.co.nz>