

U55-4 OPTIONS

STANDARD EQUIPMENT

Safety system

- Engine start safety system
- Travel motor with disc brake
- Swivel motor with disc brake
- All hydraulic control

Working equipment

- Auxiliary circuits 1 and 2
- 2 working lights on cab and 1 light on the boom
- Canopy lights
- Travel alarm
- Float blade

Operator's space

- ROPS/FOPS canopy and cab
- Weight-adjustable full suspension seat
- Retractable seat belt
- Hydraulic pilot control levers with arm rests
- Travel levers with foot pedals

- Two pattern selection system
- Digital panel
- 12V power source
- Cup holder
- Horn

Engine/Fuel system

- Double element air filter
- Auto idling system
- Water separator with drain cock

Undercarriage

- 400 mm rubber track
- 1 × upper track roller
- 5 double-flange track rollers on each side
- 2-speed travel switch on dozer lever
- 2-speed travel with auto-shift

Hydraulic system

- Pressure accumulator
- Hydraulic pressure checking ports

- Straight travel circuit
- Third line hydraulic return
- 3-pump load sensing system
- Adjustable maximum oil flow on auxiliary hydraulic circuits 1 and 2

Others

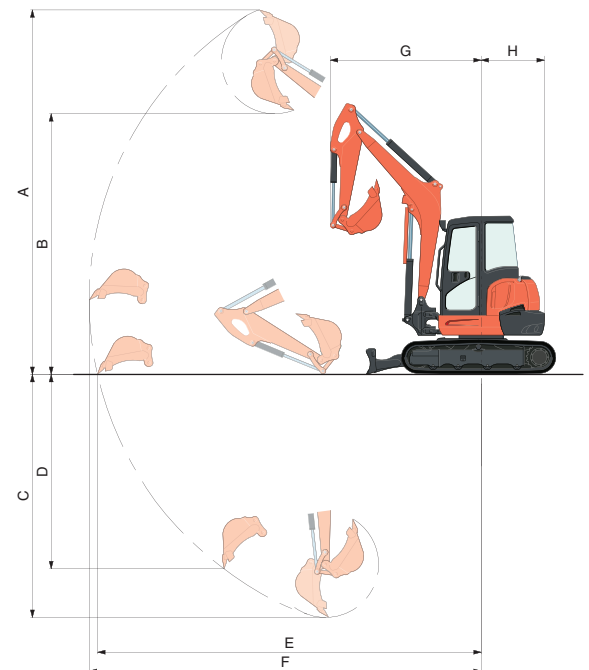
- Tool box
- Grease gun holder
- Pre-cleaner

OPTIONAL EQUIPMENT

- Cab with A/C
- Rear working lights
- Beacon lights

WORKING RANGE

Model				U55-4
A	Max. digging height	mm		5665
B	Max. dumping height	mm		4005
C	Max. digging depth	mm		3630
D	Max. vertical digging depth	mm		2830
E	Max. digging radius at ground	mm		5960
F	Max. digging radius	mm		6105
G	Min. turning radius	W/O swing	mm	2460
		W swing	mm	2020
H	Min. tail turning radius	mm		1045

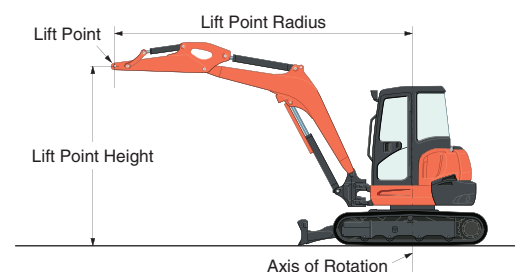


LIFTING CAPACITY

Canopy rubber

LIFT POINT HEIGHT (m)		LIFTING CAPACITY OVER-FRONT BLADE DOWN unit = ton			LIFTING CAPACITY OVER-SIDE unit = ton		
		LIFT POINT RADIUS (m)			LIFT POINT RADIUS (m)		
		4	5	MAX	4	5	MAX
GL	3	1.18	-	-	0.79	-	-
	2	1.36	1.16	1.08	0.76	0.53	0.50
	1	1.56	1.22	1.16	0.71	0.52	0.48
	0	1.65	1.21	1.18	0.68	0.50	0.49

Machine with canopy and rubber crawler, without bucket

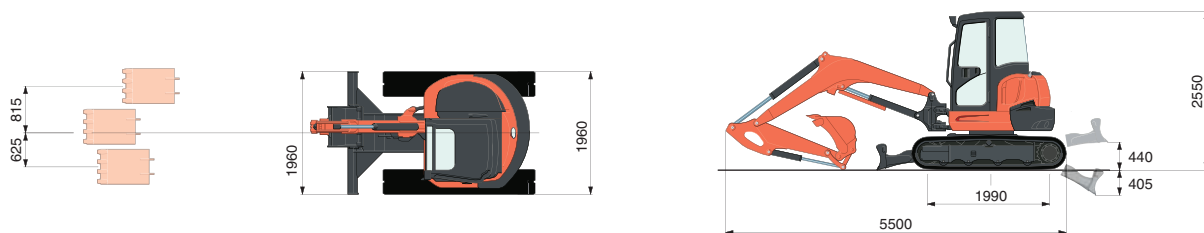


SPECIFICATIONS

Model				U55-4	
Type of ROPS / FOPS				Canopy / Cab	
Type of tracks				Rubber / Steel	
Engine	Model			Kubota V2607-DI	
	Output (SAEJ 1995 gross)		HP (kW) / rpm	47.6 (35.5) / 2200	
	Output (SAEJ 1349 net)		HP (kW) / rpm	45.4 (33.8) / 2200	
	Displacement		cc	2615	
Dimensions	Overall length		mm	5500	
	Overall height		mm	2550	
	Overall width		mm	1960	
	Min. ground clearance		mm	310	
Hydraulic system	Pump capacity		ℓ /min	56.1 variable × 2 / 37.0 Gear × 1	
	Auxiliary hydraulic flow	Left / Right	ℓ /min	37 / 75	
	Max. breakout force	Bucket /Arm	kgf	4315 / 2770	
Drive system	Travel speed	Rubber Low / High	km/h	2.8 / 4.9	
		Steel Low / High	km/h	2.6 / 4.6	
	Max. traction force	Low speed	kgf	6567	
	Tumbler distance		mm	1990	
	Crawler length		mm	2500	
	Shoe width	Rubber / Steel	mm	400	
	Ground contact pressure	Rubber	kPa (kgf/cm²)	30.4 (0.310) / 30.9 (0.315)	
		Steel	kPa (kgf/cm²)	31.0 (0.316) / 31.5 (0.321)	
Swing system	Unit swing speed		rpm	9.3	
	Boom swing angle	Left / Right	degree	70 / 55	
Blade	Dimensions	Width	mm	1960	
		Height	mm	410	
	Max. lift above ground		mm	440	
	Max. drop below ground		mm	405	
Hydraulic oil (Reservoir / System)			ℓ	45 / 79	
Fuel reservoir			ℓ	68	
Operating weight (Including operator's weight @ 75 kgs)		Rubber	kgs	5375 / 5465	
		Steel	kgs	5475 / 5565	

The company reserves the right to change the above specifications without notice. This brochure is for descriptive purposes only. Please contact your local Kubota dealer for warranty information. For your safety, Kubota strongly recommends the use of a Rollover Protective Structure (ROPS) and seat belt for almost all applications.

DIMENSIONS



Unit: mm

©2009 Kubota Corporation



KUBOTA Tractor Australia Pty Ltd

25-29 Permas Way, TRUGANINA Vic, 3029
 Freecall: 1800 334 653
 Email: sales@kubota.com.au

Web Site: <http://www.kubota.com.au>

CB Norwood Distributors Ltd

PO Box 1265, 888 Tremain Avenue,
 Palmerston North 0800 KUBOTA
 Tel: 06 356 4920 Fax: 06 356 4939

Web Site: <http://www.kubota.co.nz>